


Househam Field Master/Gate Keeper Data Transfer Doc



Before we start please make sure you have the following:

Househam Field Master Side

1 x USB Stick Named “GateKeeper” or “FieldMaster”

Make sure the home screen has the GateKeeper symbol activated and that you have version V1.05 12M date 25th October 2012 installed or newer. You can find this by pressing the help button  on the home screen.

Gatekeeper side

There are a few options here regarding level of integration between the two systems.

Level 1.

Importing and exporting documentation including field spacial data (export/import field list + pic list: products, weather, work plans, variable data and field guide lines & boundary data).

Module Required:

- Devices non spacial - £160 licence + annual support cost (GateKeeper)

Level 2.

Importing and exporting field spacial data (export/import field list + pic list: products, weather, work plans, variable data and field guide lines & boundary data).

Modules required:

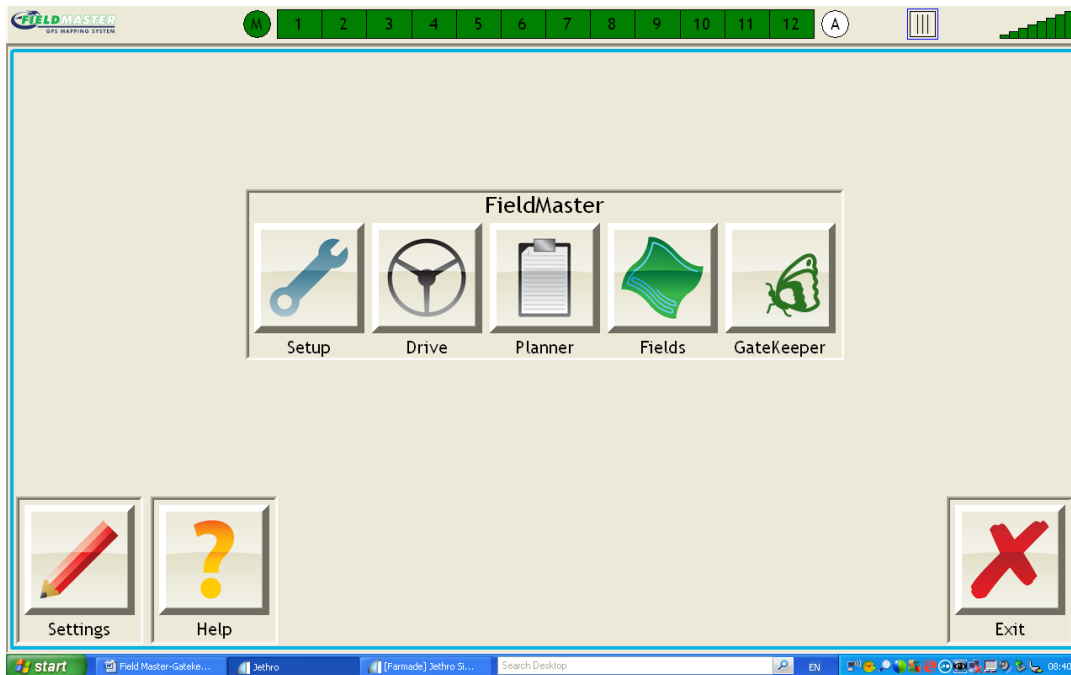
- Farm Mapping - £450 licence + annual support cost (GateKeeper)
- Precision Farming Actual – (import recorded data, maps, guide lines, export field list, not work plans) £300 licence + annual support cost (GateKeeper)
- Precision Farming Target – (create & export maps variable rates and work plans) £300 licence + annual support cost (GateKeeper)



Importing new jobs

1. Fully load the Field Master Controller then install the USB Stick into the USB connection port.

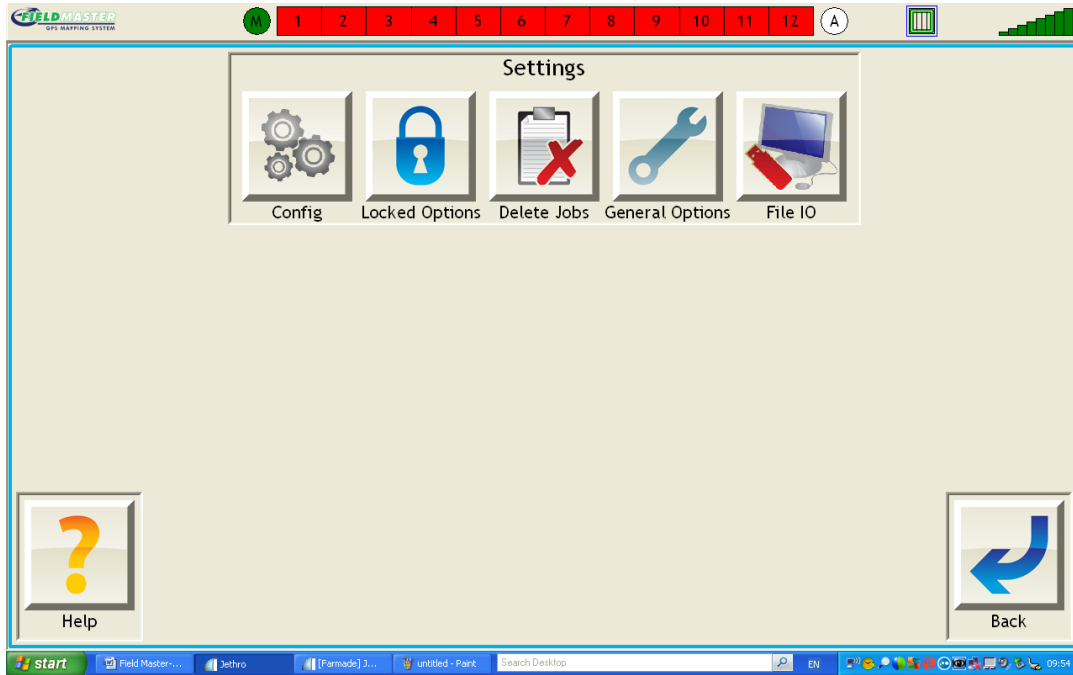




2. Once the Field Master Controller is fully loaded Home Page will appear as below.

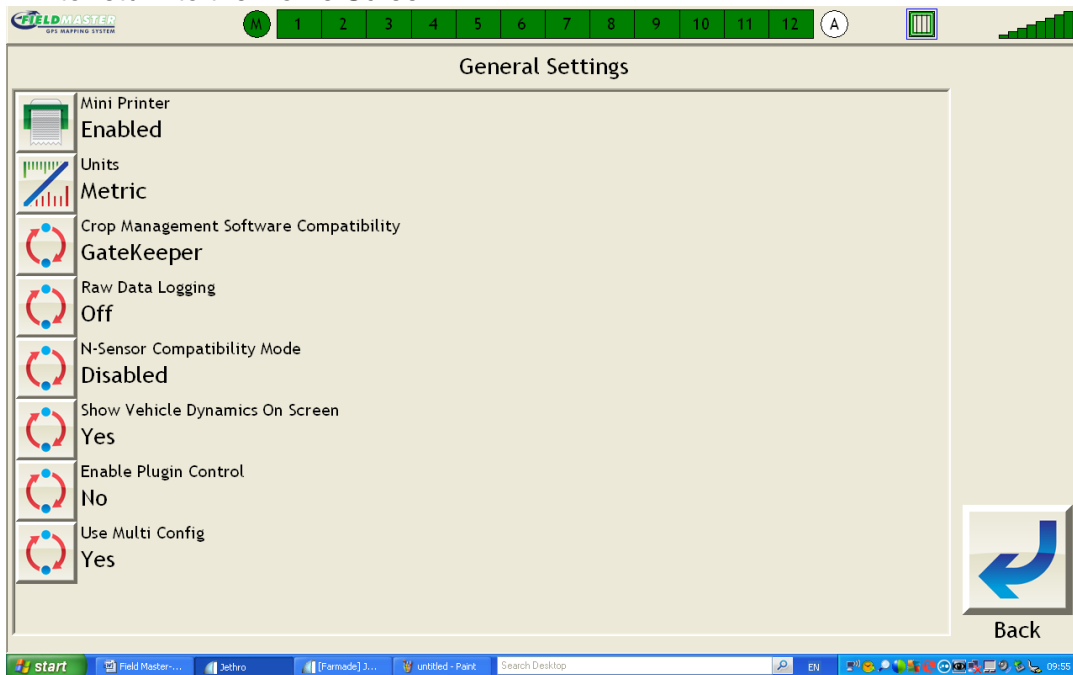


3. If the “GateKeeper” symbol is not activated this can be activated simply, depress the “Settings”  button and this will open the “Settings” menu. You are now in the “Settings” page, select the “General Options” button  and move to step 4.

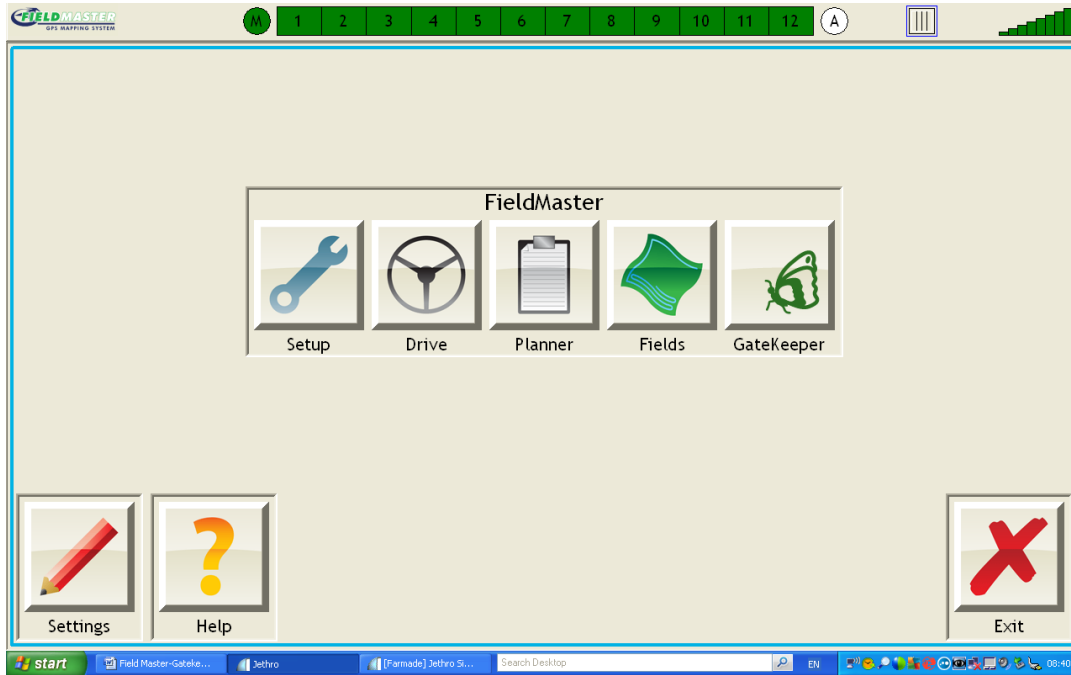
(If the GateKeeper Symbol  is already installed on the home page move to step 5).



- Now in the "General Setting" Menu, use the  button beside the "Crop Management Software Compatibility" until "GateKeeper" appears once this has use the "Back" key  to return to the Home Screen.



- Select the GateKeeper symbol  on the Home Screen, to Start.

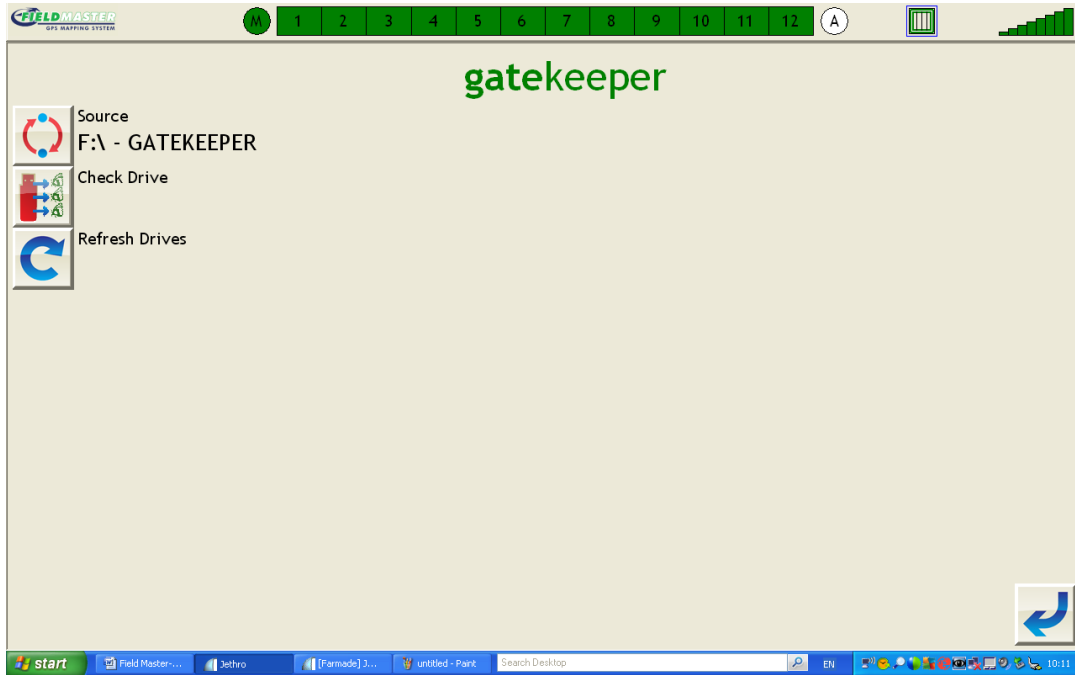



6. You are now in the GateKeeper page, and will be asked what do you wish to do? move to step 7.



7. **Importing data**, we first need to select “Check for New Files” as highlighted on previous slide, then select the Tick Button to accept. This will take you to the following page: The “Source” will be your USB Stick so as long as it says one E:\ -


GateKeeper or F:\ - GateKeeper or E:\ - FieldMaster or F:\ - FieldMaster this depends on what you named it before you started if either of these appear its fine.




8. You now need to “Check Drive” for data so select the  Check Drive button from the menu, this will take you on to this page where you will be able to “Import Files Now” (this will allow you to import all data from your USB Stick on to the Field Master Unit as you can see here “3 files were found and 3 were added” this will differ depending on number of plans you have applied on your USB Stick).

This can be done manually please see step 6.




9. To manually manage data select “Go To Import Page”  this will now open the follow page. Move to step 10.

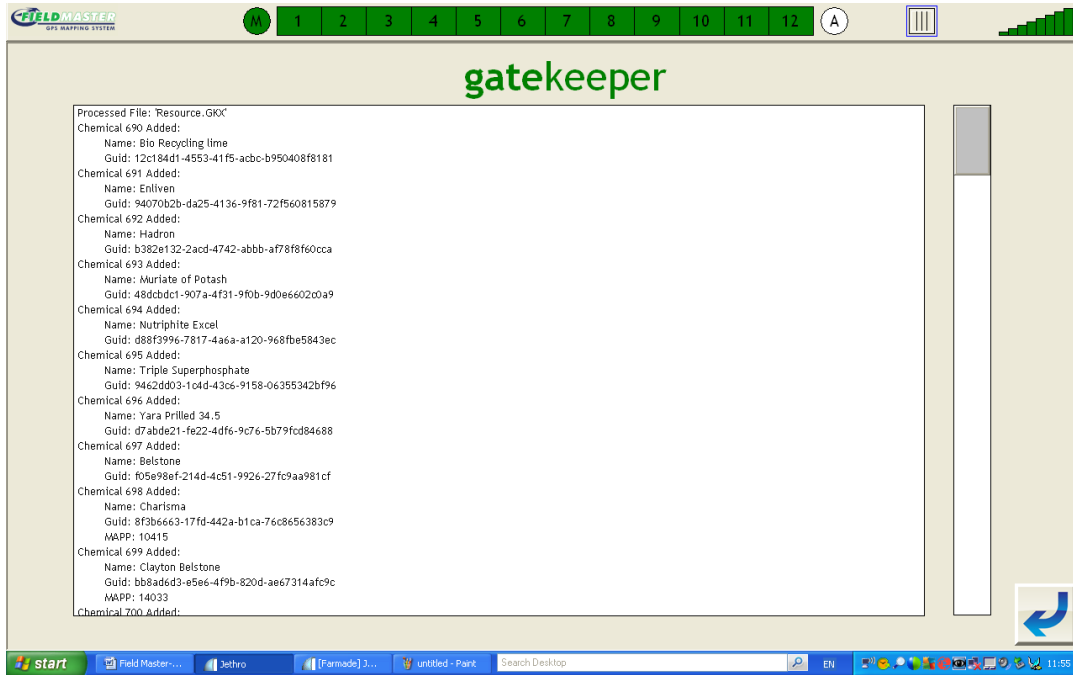



10. Select the Plans you wish to import then select the Tick  button to accept, ALWAYS import the “resource.GKX” file if importing manually as if changes have been made within the GateKeeper system these will come over through this folder onto your Field Master Unit.

Whilst importing each plan a page similar to this will open, to show you data importing. (note Importing GK File: number and name will differ depending on Plans/Jobs/Farms)




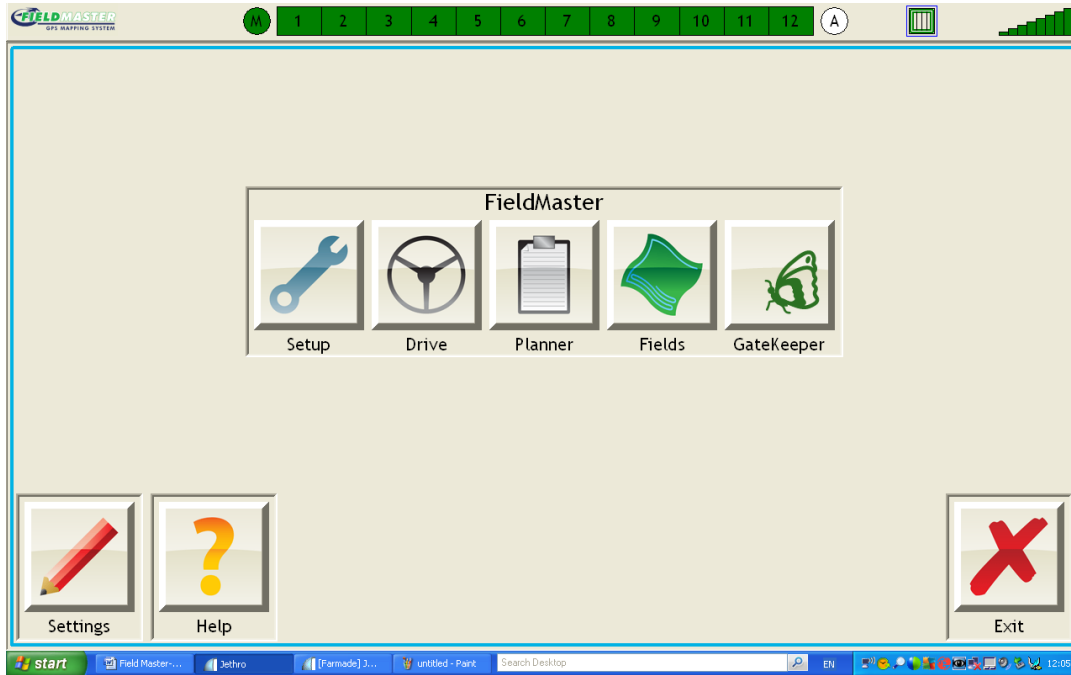
Once the Plan has been added a Plan description will be shown, press the return button  after each transfer to get you back to the “Go To Import Page” for manually importing Plans.




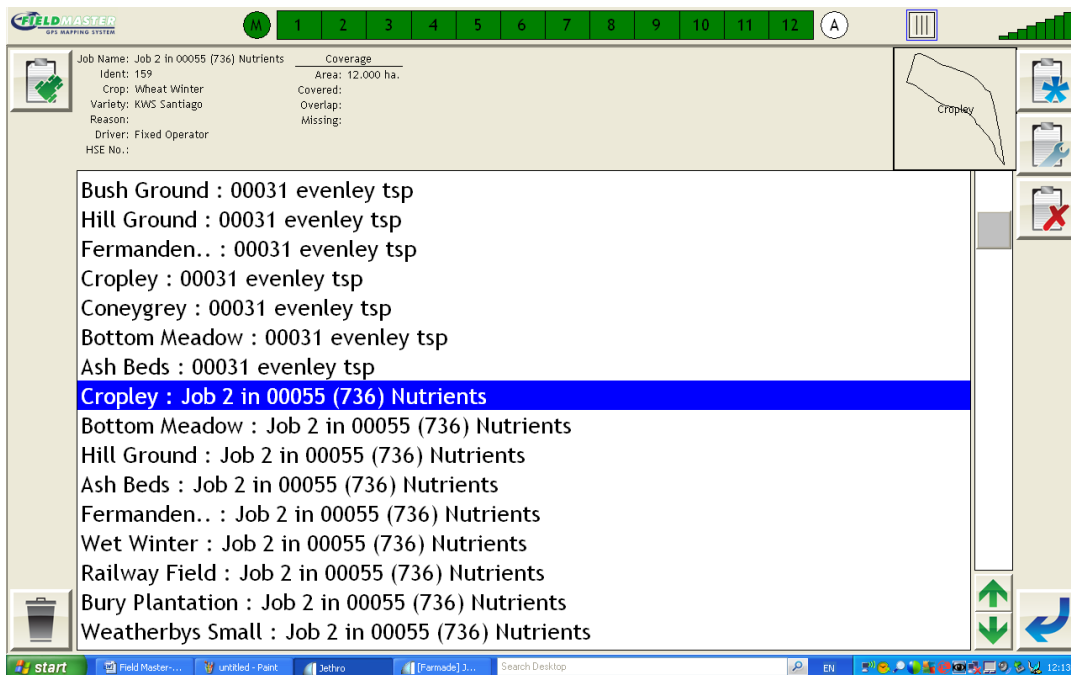
11. Now the Plans have been applied to the Field Master Unit (this is shown as the Plans & Resources are faint), you will need to exit out of the current page by using your return key , press this until you return to the Home page see step 12.



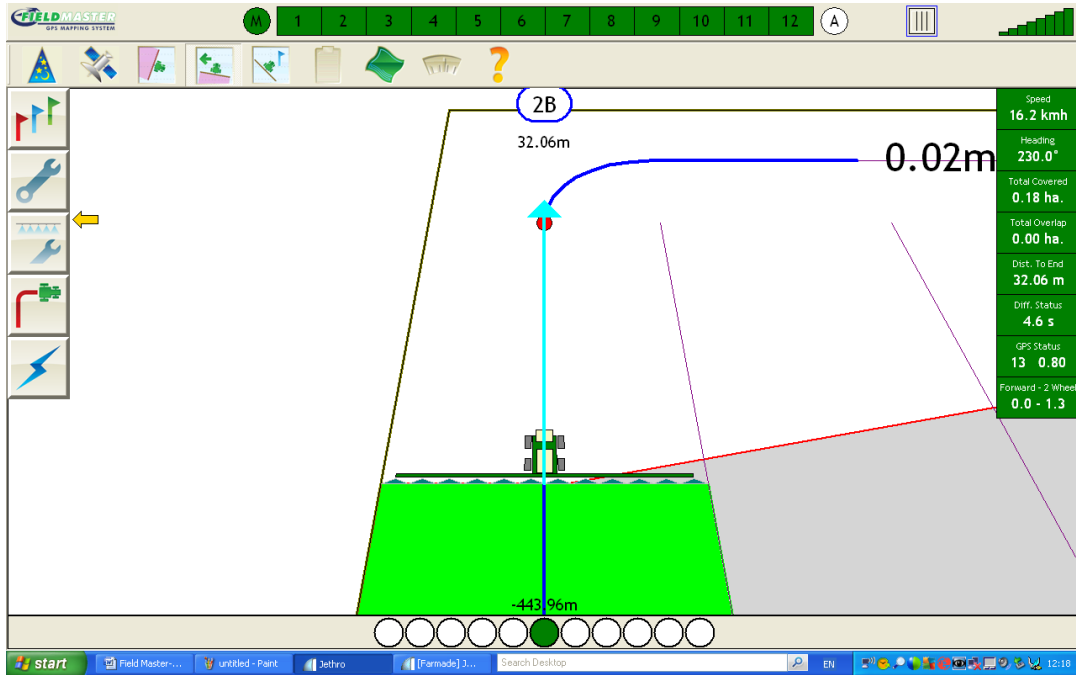
12. You are now at the "Home Page" and want to see your plans. simply select the "Planner" button  and move to step 13.





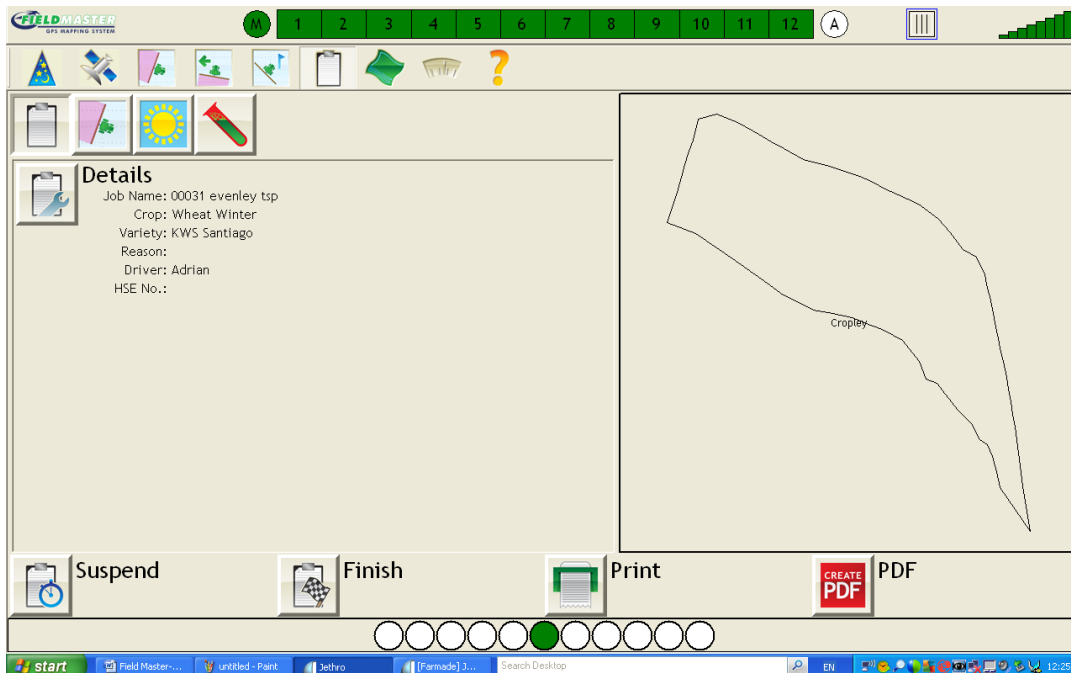
13. You are now in the “planner” here you will see all the Plans that you have imported from your USB Stick via GateKeeper. Select the Field/Plan you wish to start by highlighting it then select  button to load the job, this will automatically take you into the “Drive” page and has now started this Job.





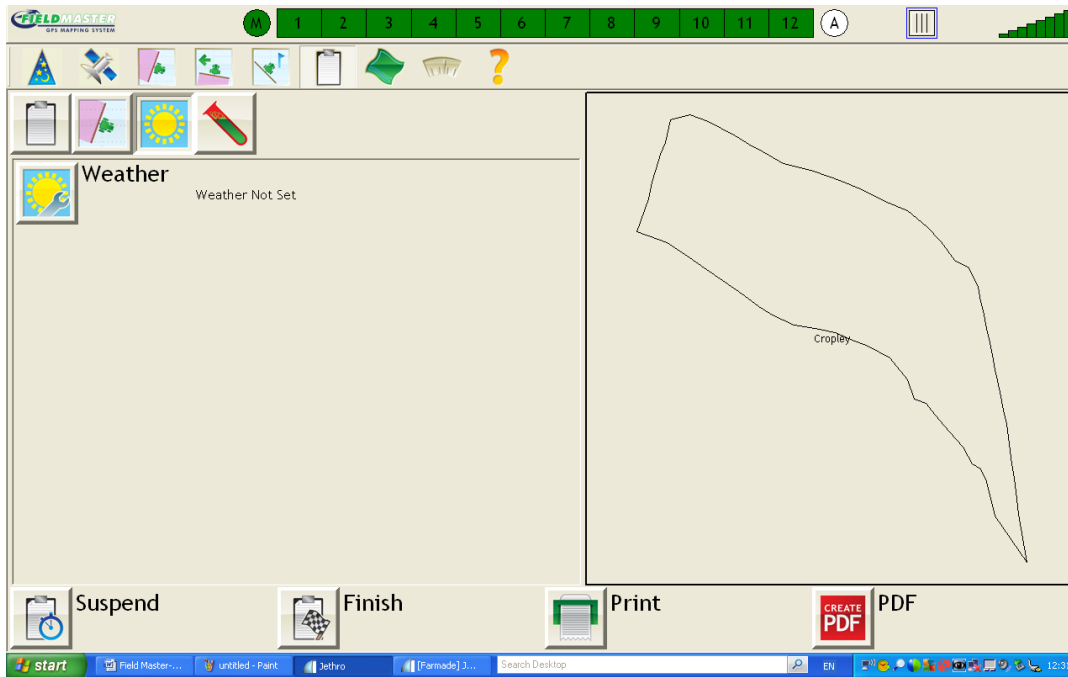
14. Continue to spray the field as the job is now running.






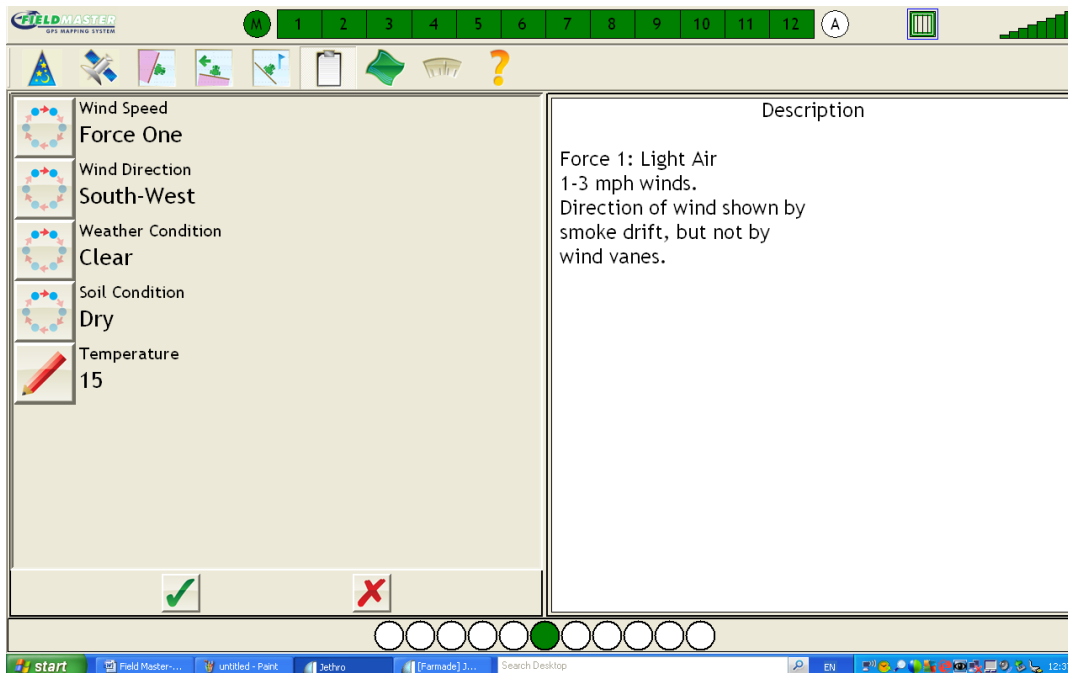
15. You have now finished your field & wish to end the job. First select the “Clipboard/Planner”  button at the top of the “Drive Screen”. Once the button is depressed it will bring you into the final stages of the job, to add the weather conditions first select the sun picture  from the menu and move to step 16.




16. You have selected the Sun button  now select the Sun/Spinner  button to alter the weather conditions to what best suits your conditions. See step 17.

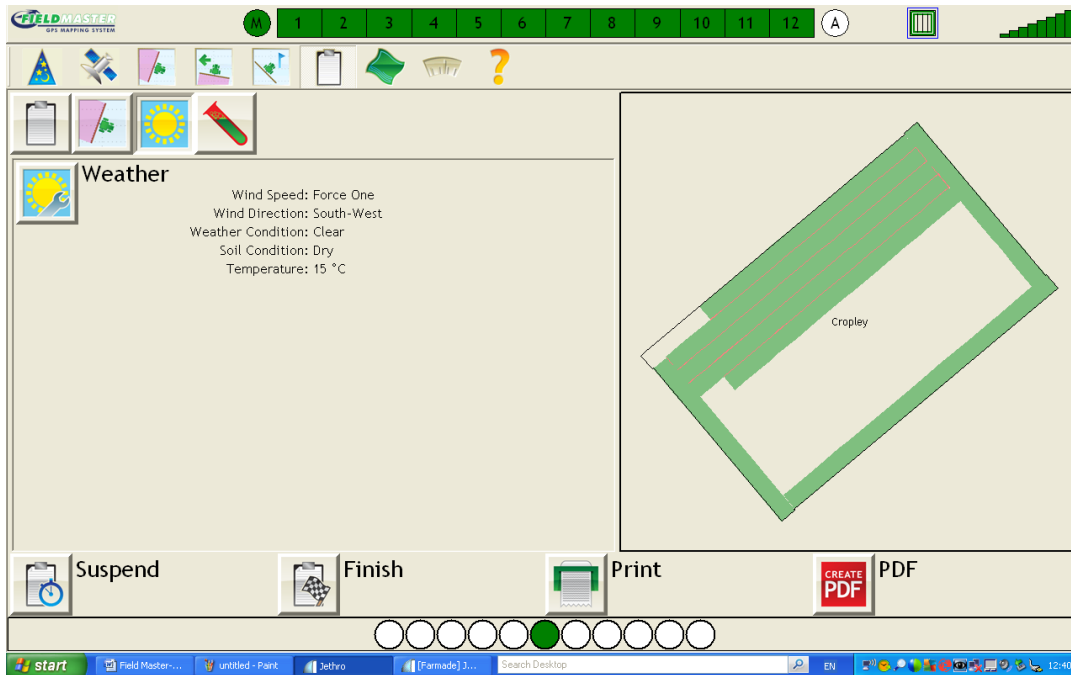



17. Use the tab  & Pencil  buttons beside the weather conditions to alter weather to suit your field conditions once happy select the Tick  button to accept.

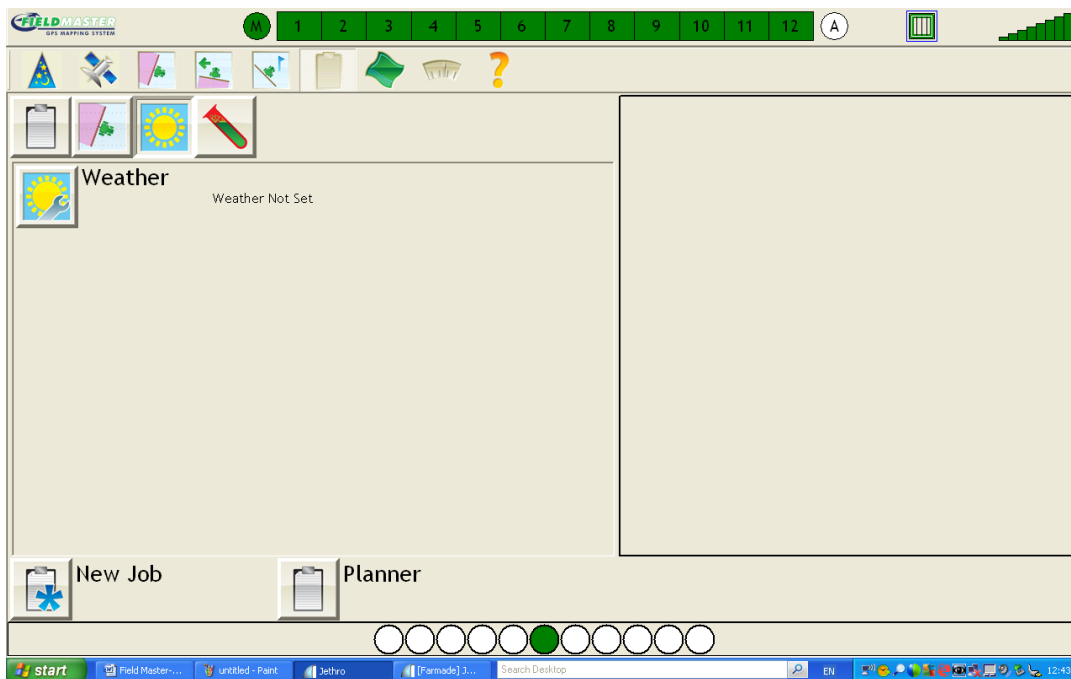


18. You will now have returned to the previous screen and the weather conditions would have now been added to this page. To finish the job now select the “Finish”  button, this has now finished your current job and saved it to the Field Master Unit. (Please note once you kit save NO alterations can be made to that job on the Field Master Controller)

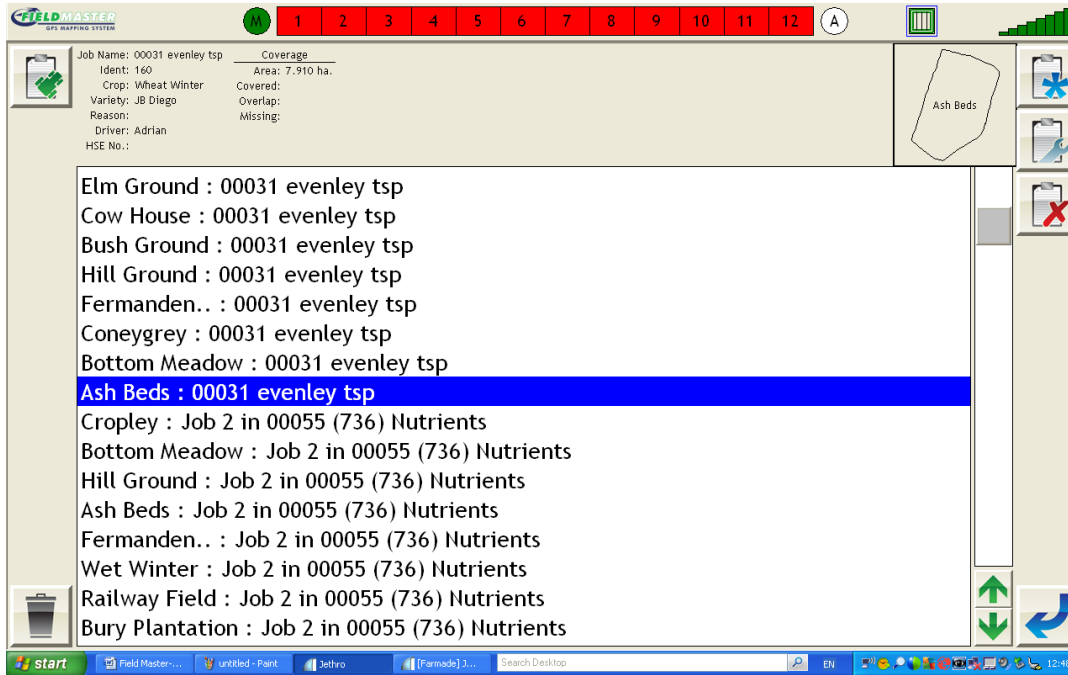
Move to step 19.



19. You have now finished your job and wish to start the next now select the Clip Board/Planner button  and move to step 20.



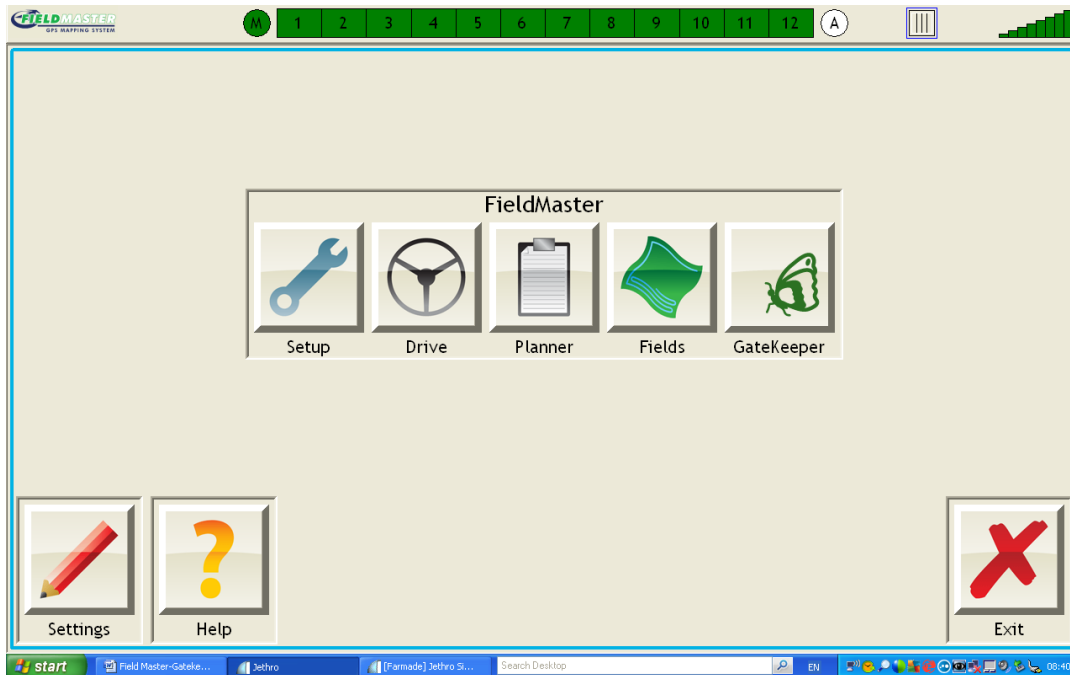
20. Select your new job and follow steps 13-19 as before.



Exporting completed jobs


(Make sure your USB Stick is in the Field Master Controller)

1. Select the Gate Keeper symbol  on the Home Screen, to Start.

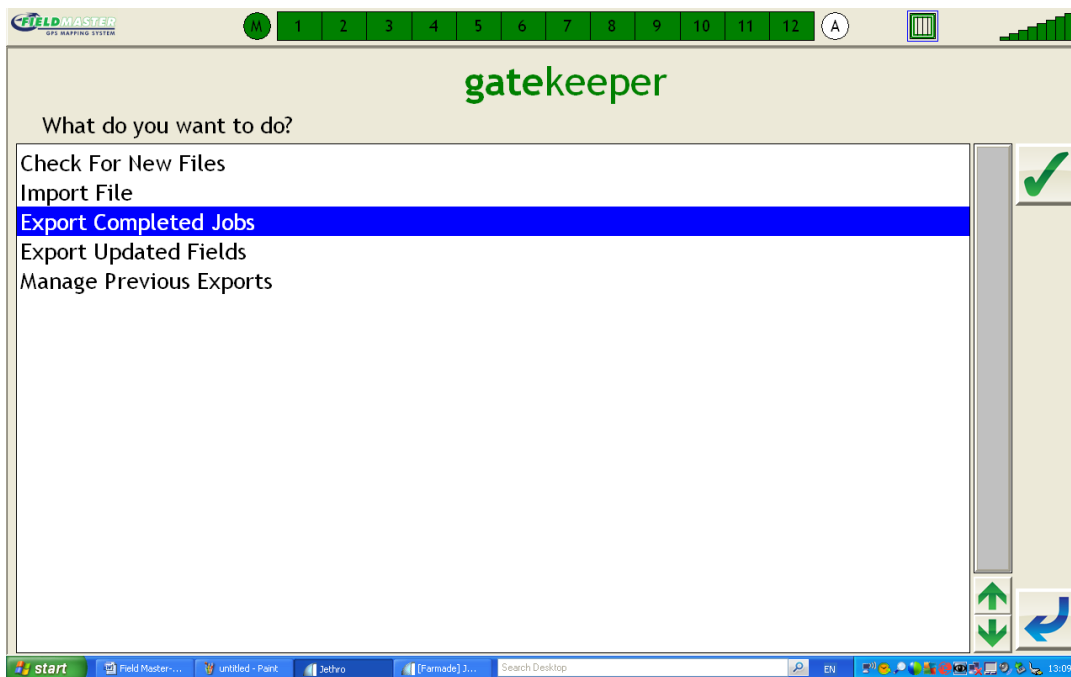



2. You are now in the GateKeeper page, and will be asked what do you wish to do?

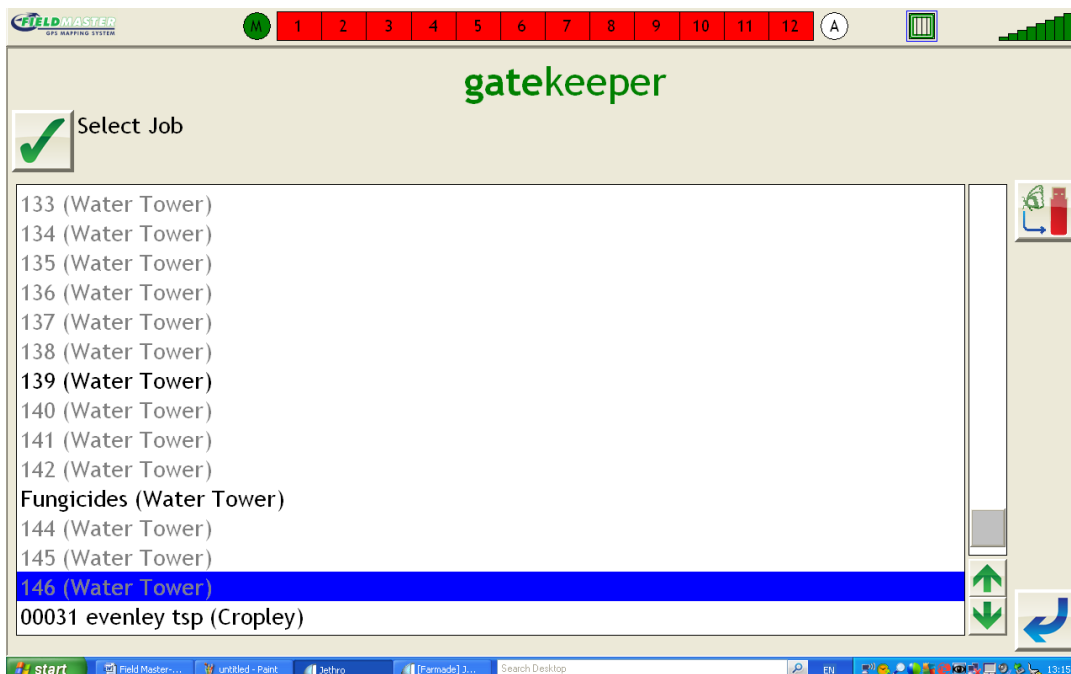



3. Exporting data, we first need to select “Export Completed Jobs” as highlighted then select the Tick Button  to accept.

(You can also do this for “Export Updated Field” if you wish to take the new boundary of the field back to GateKeeper).

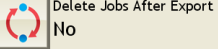


4. Once you have selected the Tick  button you will be brought into this page. Here you can “Select & Deselect” completed jobs for export. The Jobs selected i.e High lighted are the ones that will export. Move to step 5.




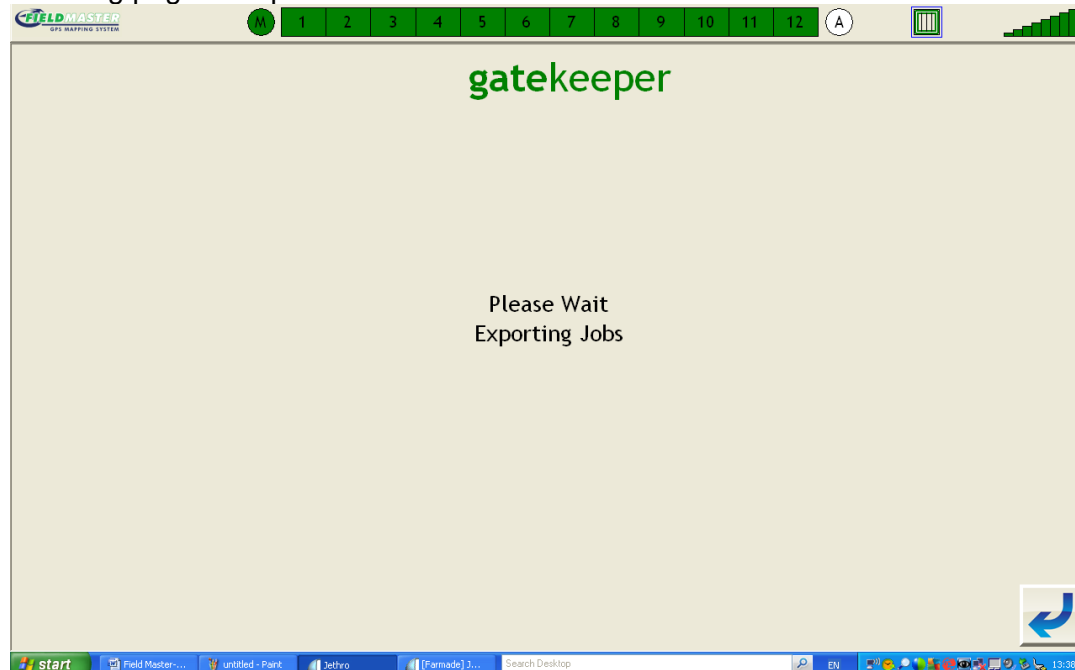
5. Ok you're now ready to Export the data from your Field Master unit to the USB Stick.
So now select the  symbol and the following page will open.
In this menu you can select the “Drive” it uses to export too, as before make sure you're your using either E:\ - GateKeeper or F:\ - GateKeeper or E:\ - FieldMaster or


F:\ - FieldMaster this depends on what you named it before you started if either of these appear its fine.

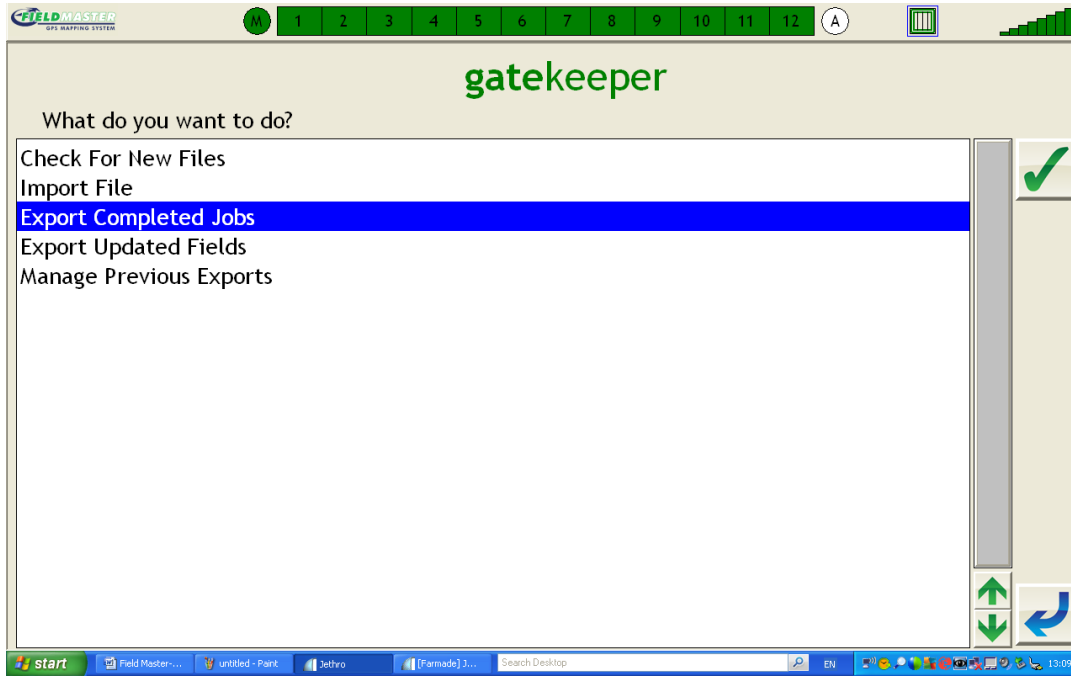
You can also select if you wish to “Delete Jobs After Export” or not here its selected “No” so again if you wish to “Delete Jobs After Export” use the  button beside to change to “Yes”. Move to step 6.



6. To Export Jobs, now select the  button. Once the button is depressed the following page will open.



7. Once the transfer of data is complete you will come back to the “What do you want to do” menu. Now that the transfer is complete use the Tick  button to return to the Home page.



8. The Field Date is now on your USB Stick, now take to the office PC and use the import section in Devices.